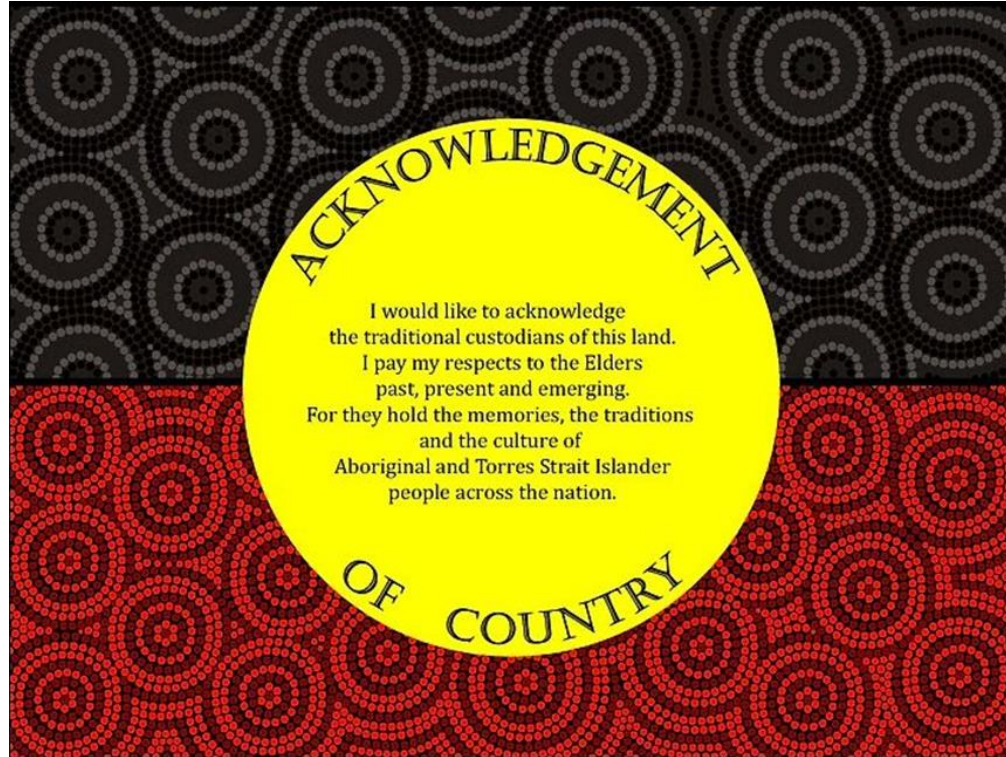




Epping West Public School
Creative Successful Learners

Welcome to
Kindergarten

Acknowledgement to Country



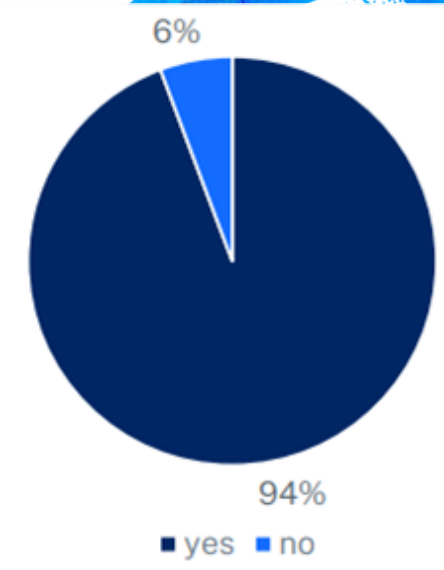
EAL/D (English as an Additional Language or Dialect)

At Epping West we have:

- **94%** LBOTE
- 2023 data shows the EWPS community speaks **44** different languages
- **all teachers** at EWPS provide **explicit language teaching**

The role of our EAL/D teacher is to:

- assess and provide intensive English language support and instruction for EAL/D students who have recently arrived to Australia and those who require further support with English
- work collaboratively with classroom teachers to meet the needs of EAL/D students within the classroom and in withdrawal groups
- support teachers to develop learning programs and teaching practices suited to EAL/D students
- organise multicultural events and celebrations for the school community
- arrange interpreter services if required for parent / teacher interviews
- report on identified EAL/D students twice per year



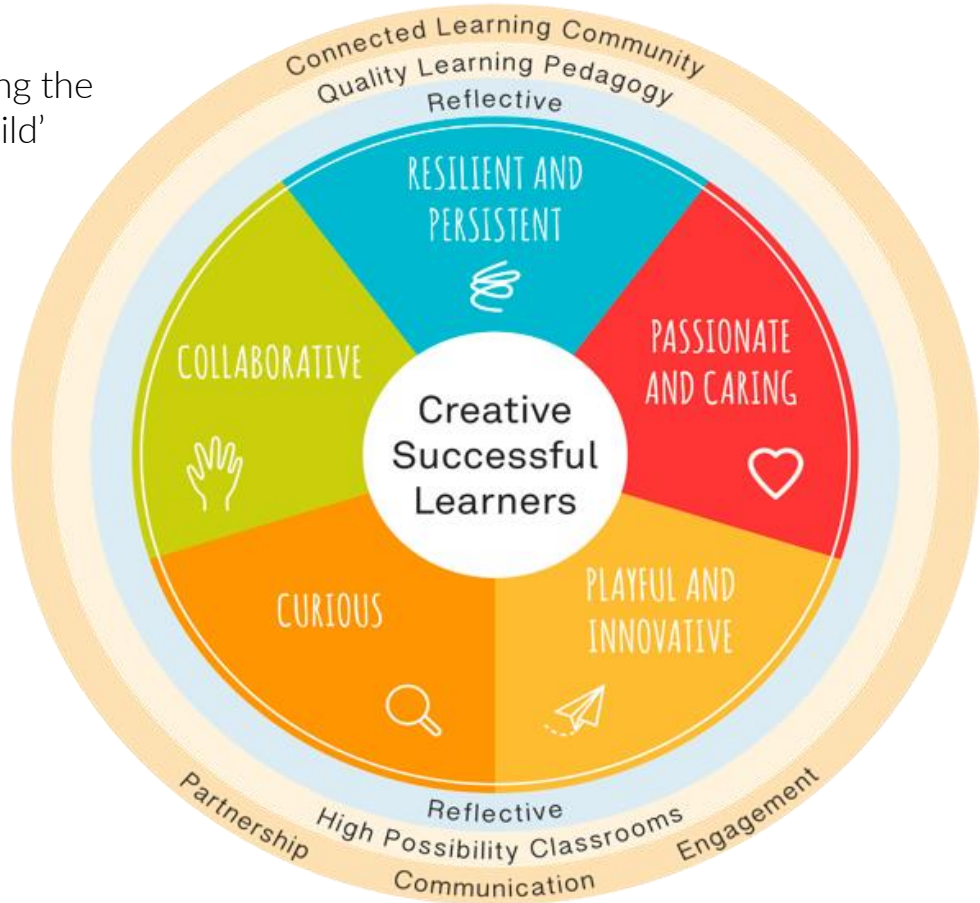
Kindy Expectations

At EWPS we expect Kindy children to develop:

- × Basic skills in numeracy and literacy at their individual level
- × An interest in society, culture and the world around them
- × Personal work habits and skills
- × Personal independence
- × Personal hygiene practices

Creative Learner Qualities

Developing the
'whole child'



Curriculum

Explore and learn across all subjects to enhance knowledge and help to develop creative, successful learners.

Areas of learning include:

- Literacy:
 - ❖ Reading - rich literature, explicit skills and strategies
 - ❖ Phonemic Awareness
 - ❖ Phonics - sounds
 - ❖ Spelling
 - ❖ Writing
 - ❖ Handwriting
- Maths
- Geography
- History
- Science & Technology
- Visual Arts
- Personal Development, Health and Physical Education
- Music

Music, Dance & Sport

Music- Run by Mrs. Sherie Barton once a week

Dance- All Kindergarten students participate in grade dance once a week (from Term 2)

Sport- Moving Bodies, YMCA

All Kindergarten students participate in:

Term 1: Moving Bodies (Fundamental Movement Skills)

Term 2: Moving Bodies (Ball Skills)

Term 3: YMCA (gymnastics)

Term 4: Class run sporting activities



School Uniform & Toys

- Promote pride in wearing the correct school uniform:
 - ❖ Black school shoes except for sport shoes on sport days
 - ❖ Grey socks for boys
 - ❖ White socks for girls (no frills), grey stockings in winter
 - ❖ Maroon shorts for girls on sport day
 - ❖ School hat everyday
 - ❖ No stickers on hats
 - ❖ **NO** digital watches
- Uniform Shop – Open Wednesday 9:10am-12pm. Order online.
- NO toys be brought to school. They may be lost or broken.

Home Folders

- Used to transport Homework books, reading materials and notes to and from school.
- Need to come to school everyday with your child's regular school bag.
- Attach to the outside of your child's school bag using a carabiner clip.



Recess & Lunch



- Recess- small nutritious snack: yoghurt, cheese, crackers, fruit and vegetables
- Lunch - main healthy meal at school: sandwich, wrap, rice
- Waste-free lunches
- Lunch orders - ordered through the Flexisc
- **NO NUTS**
- No sharing food
- Water bottle
- **Easy to open containers**, labelled with child's name.



te

LABEL EVERYTHING

Homework

Reading a book

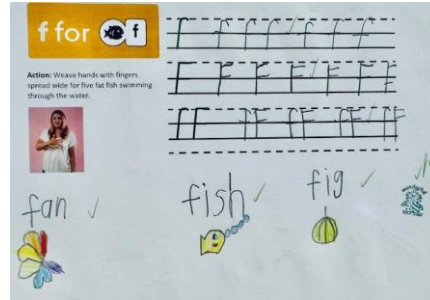
- Levelled reader daily
- x1 Library book once a week

Sound book

- Focus on the sound, not the letter name
- Please Revise ALL SOUNDS learnt
- Sent home on Monday
- Returned on Friday

Sight words

- Difficult to 'sound out'.
- Need to be identified based on sight
- Saying the words quickly, fluently, and consistently without prompting
- Testing every Friday
- New words sent home if previous colour sheet has been successfully learnt



Sound Book example page

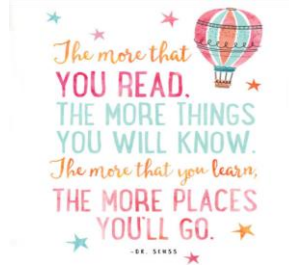


Things to do at home

- Home Reading - Books and Wushka
- Sound Books
- Sight Words
- Mathletics
- Number Identification
- Writing Numbers

Fine Motor

- ❖ Colouring
- ❖ Tracing
- ❖ Cutting with scissors (thumb on top)
- ❖ Tying shoe laces
- ❖ Playdough



**THERE IS NO
ENJOYMENT
LIKE READING!**

**TODAY A
READER,
TOMORROW A
leader!**

Merit Awards

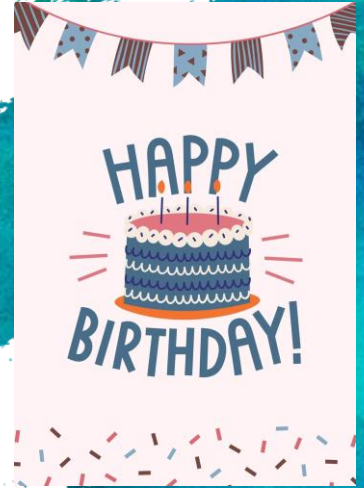
- Given out to x2 students once a week
- Awards are given based on **effort** in working towards the Learner Qualities rather than success alone
- These students become the class leaders for the week
- Leaders get to stand at the front of the line, retrieve the lunch orders, help hand out books etc



Birthday Celebrations

Families may wish to supply:

- individual cupcakes (be aware some students have allergies to nuts and egg)
- individually wrapped food items in a party bag
- individual party bags with small gift items such as bubbles, stickers, bouncy balls.
- party bags are sent home at the end of the day and are only opened with parental approval.



NOTE: Parents/Caregivers are under no obligation to supply the class with anything for your child's birthday

Communication



- **No news is good news**
- Notes from Miss Saliba will come on a pink piece of paper
- Writing a note and putting in your child's Home Folder is the quickest form of communication
- Important matters - Face to face meetings can be arranged
- Interpreters can be booked for face to face meetings
- Email to the school email address eppingwest-p.school@det.nsw.edu.au

Communication

Where to receive information:

- School website/blog
- School Bytes
- School newsletter
- Emails from the office
- Notes sent home in Home Folders
- Class Seesaw



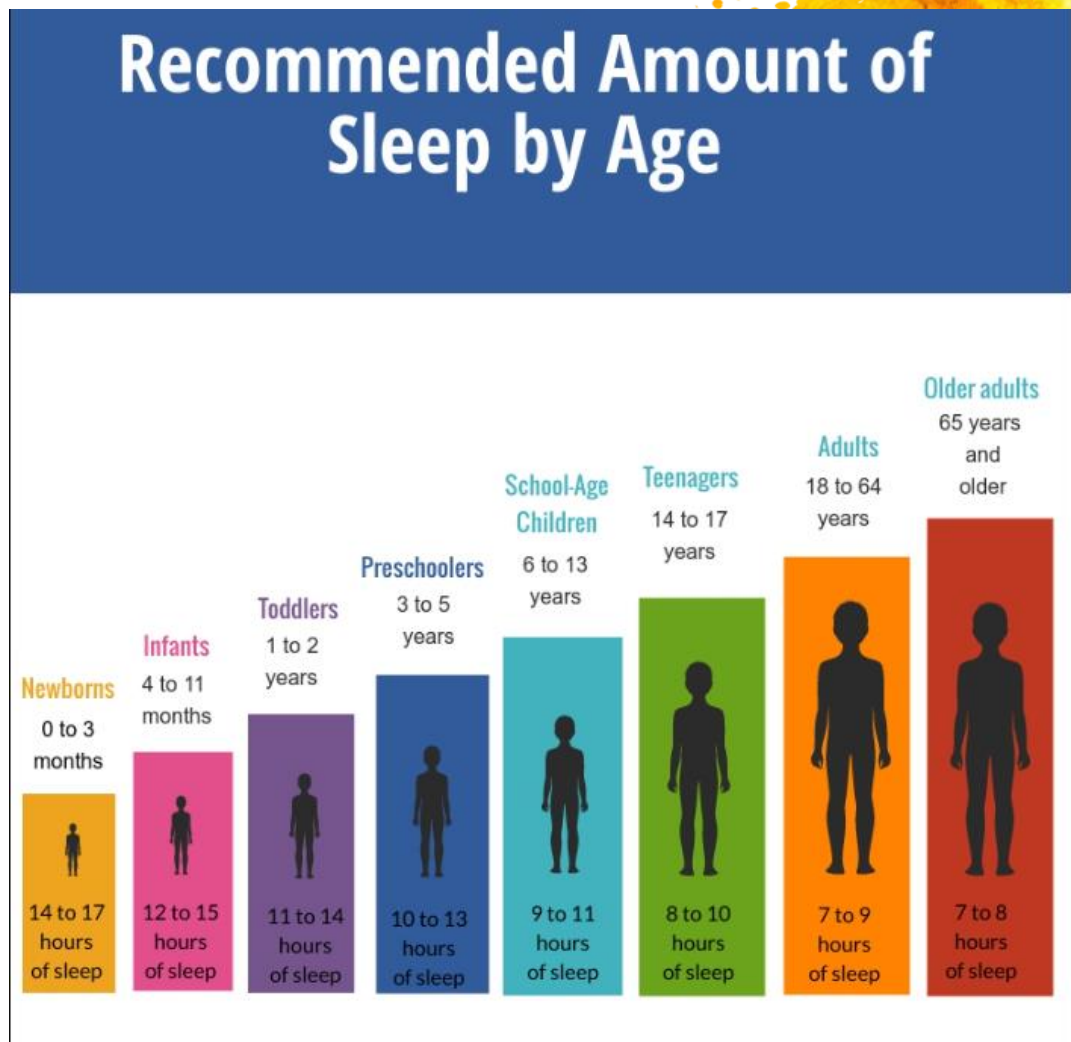
Seesaw

- Seesaw is your child's digital portfolio. It is an opportunity to see some of the learning occurring in the classroom.
- Please **do not** contact your class teacher on Seesaw.



Sleep

- Is your child getting the recommended amount of sleep each night?



Keeping an eye on screen time



Are your kids constantly glued to a screen? Where do you draw the line to keep screen time in check?

This quick guide can help parents manage screen time.

What is screen time?

Screen time is the amount of time spent watching a screen or electronic media for entertainment. It includes:



Screen time does not include time spent on educational activities, such as for school work.

What is the right amount of screen time? →

Health experts suggest these screen time limits:



Source: Australia's Physical Activity and Sedentary Behaviour Guidelines

Procedures for Late Arrival & Early Leavers

- School starts at 9:10am. Playground play from 8:40am
- *Late Arrivals* - Students arriving after 9:10am must be accompanied by a parent/carer to the school office to record a partial absence and sign a late slip and then the office staff will ensure they get to their classroom.
- *Afternoon Pick-up* - Students are walked to their allocated gate. If there are any changes to pick up arrangements please email the school or write a note to the class teacher as soon as possible.
- *Early Leavers* - If parents wish to pick up their child before 3:05pm, you are expected go the school office to record a partial absence and sign an early leavers slip.
- *Wet weather* - please wait at the gates. Pack a raincoat in your child's school bag.



NSW Department of Education

Why attendance matters

When your child misses school they miss important opportunities to...



Learn



Make friends



Build skills through fun

education.nsw.gov.au

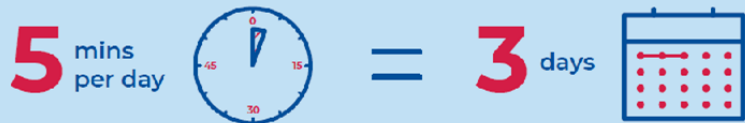


Minutes lost = days lost per year

A couple of minutes here and there doesn't seem like much, but...

When your child misses just...

they miss days per year



Patterns of lateness can have a serious impact on your child's education.

education.nsw.gov.au

A close-up photograph of a hand holding a lit sparkler. The sparkler is bright and glowing, with many sparks flying out. The hand is wearing a grey, textured sweater. The background is dark and has a splattered, ink-like texture. The overall mood is celebratory and warm.

Thank you!

Have a wonderful day